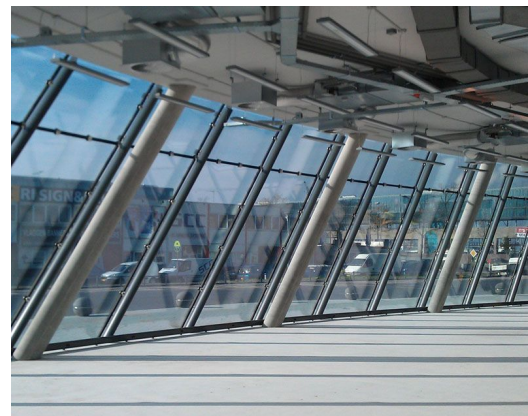
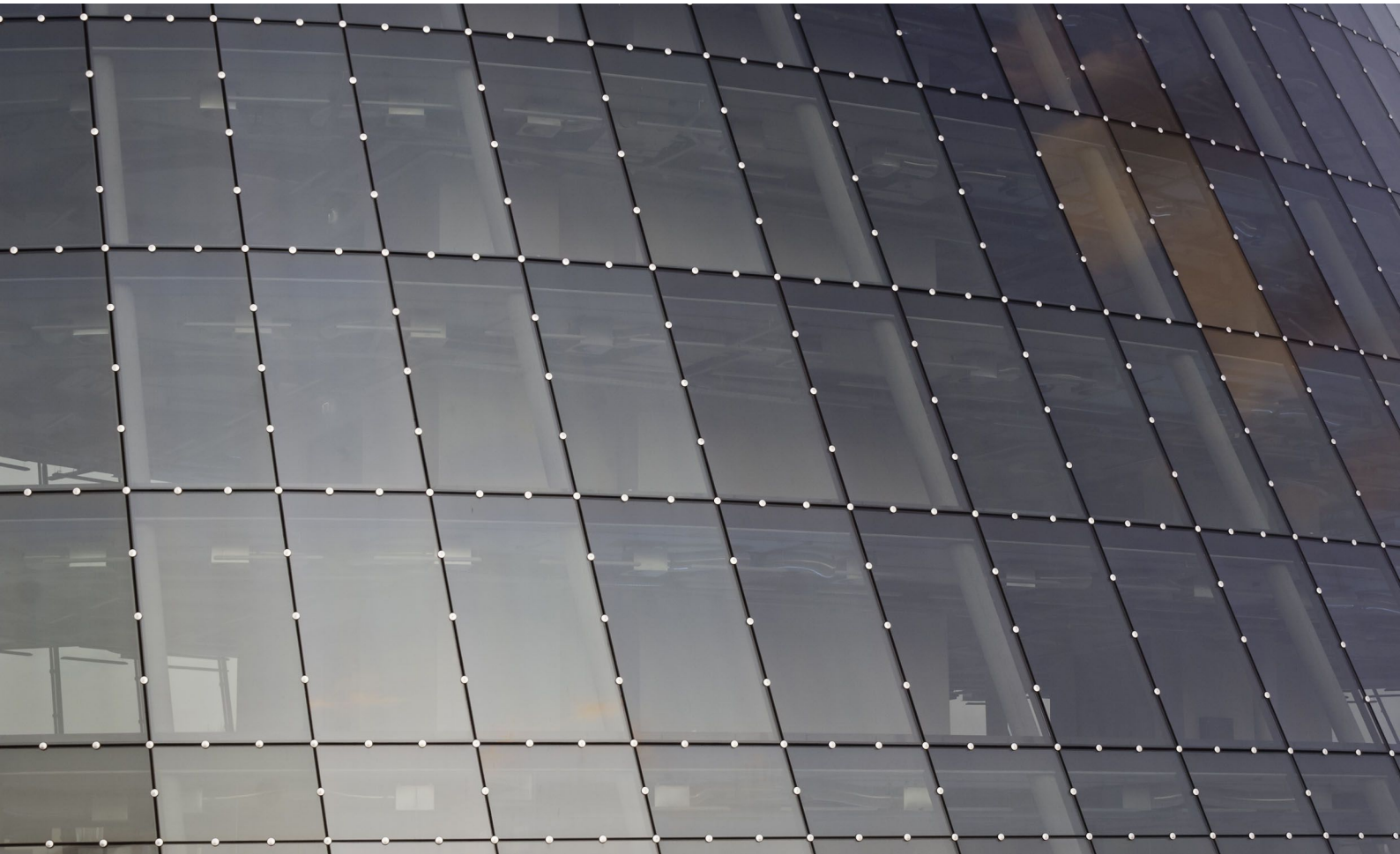


THE CURVE

Architect
Client
Location
Year

OZ+V (ED VEENENDAAL)
KROONENBERG GROEP
NETHERLANDS, AMSTERDAM
2012

06223



The office building The Curve is a new landmark in the harbor of Amsterdam. The asymmetrical stand alone building is transparent and has slanting walls combined with an elliptical floor plan. It contrasts with the surrounding buildings. The form complexity has been the greatest challenge. By efficiently making use of parametric engineering a few details could be designed as principles after they could be applied to many different positions in the building.

Large and heavy glass panels have been used, some heavier than 1000 kilograms and longer than 4,5 meters. The facade completely consists of these panels and the glass is secured by means of clamping plates, that give an extra rhythm to the building skin. The application of triple insulated glass units with argon filled cavities and a high-performance solar coating has established an U-value of only 0.6 W/m²K, which is highly energy efficient.

octatube