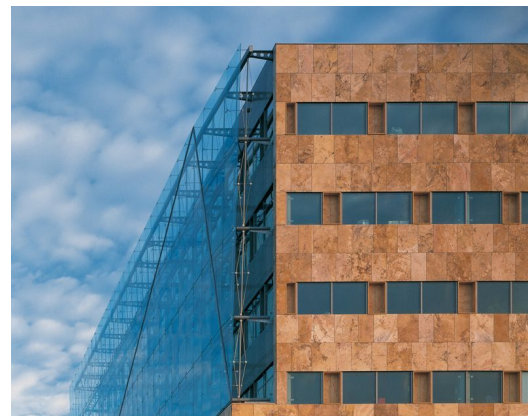


# ZWITSERLEVEN

Architect  
Client  
Location  
Year

DE ARCHITEKTEN CIE.  
BALLAST NEDAM  
NETHERLANDS, AMSTELVEEN  
1997

04238



For the headquarters of the Dutch insurance company Zwitserleven in Amstelveen (designed by the Architecten Cie) a second skin facade has been realized and two glass skylights with trusses partly stabilized with innovative glass pressure rods.

**octatube**