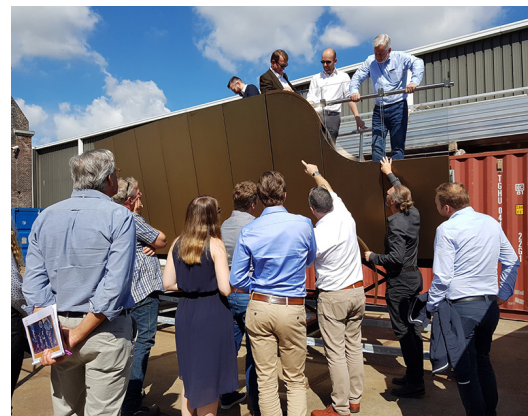
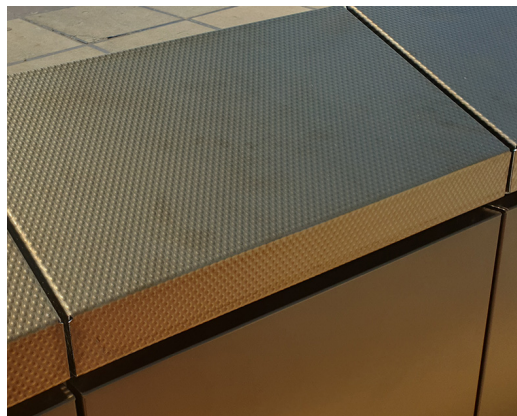
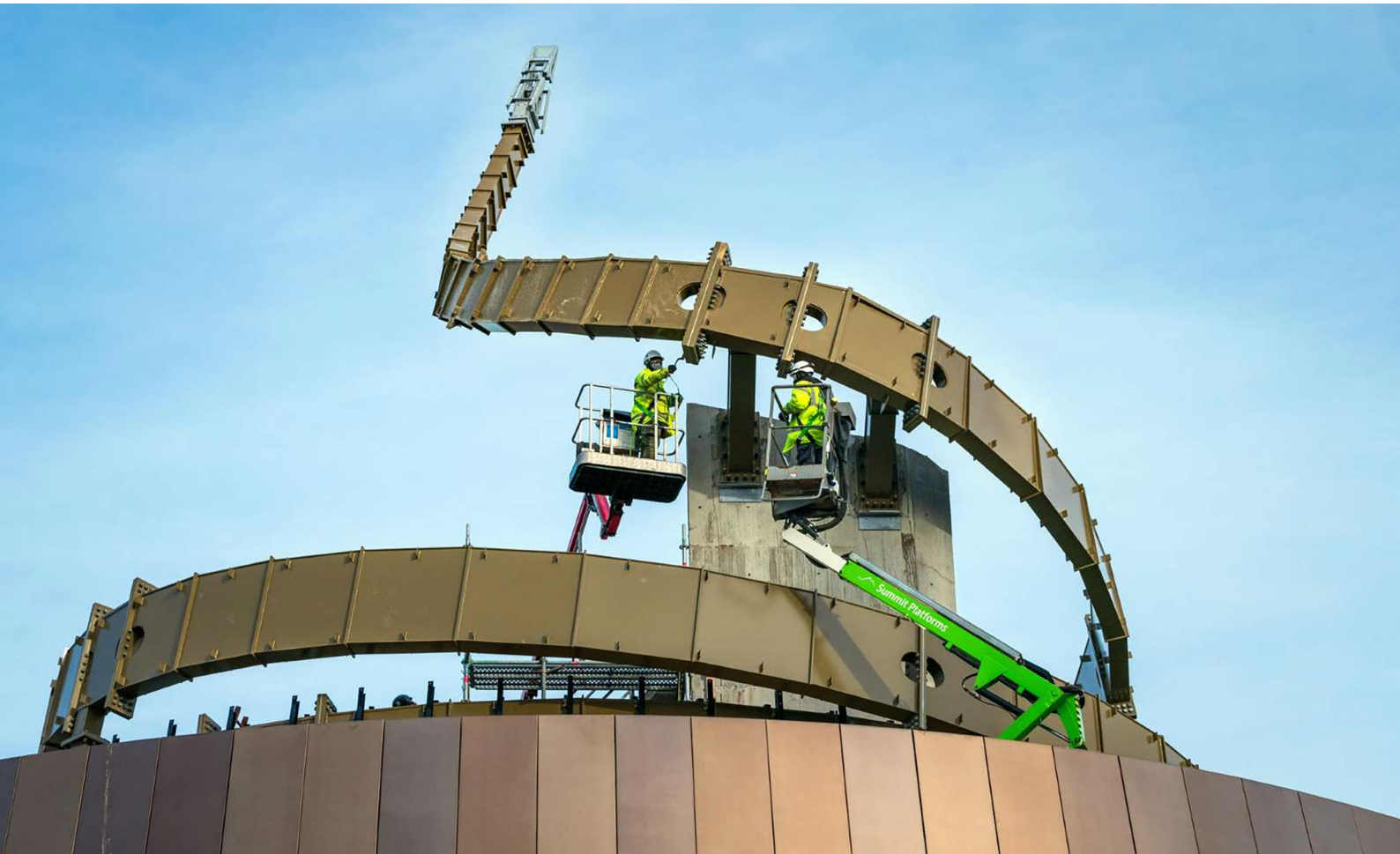


W EDINBURGH - ST JAMES QUARTER

Architect
Client
Location
Year

JESTICO + WHILES
LAING O'ROURKE
EDINBURGH (SCOTLAND)
2021

07788



Winding steel ribbons wrap themselves up to form the striking exterior of the W Edinburgh which gives a contemporary twist to the skyline of the historic city. Octatube has realized the stainless steel façade of this striking building. The ribbon is made of Rimex steel: 2 mm thick stainless steel of which the colours and tones vary in different lighting conditions. Due to its curves, the ribbon has a complex geometry with up to 15 cm of torsion in the plating.

Thanks to our customized software, we were able to design and optimize the structure in the smallest detail. The roof of the building serves as an outdoor terrace for parties and events. It has nine elliptical roof lights on which can be danced thanks to a very durable anti-slip etching. We invested in the creation and extensive testing of innovative technical and structural solutions. With prototypes and mock-ups and meticulous control of material use, we saved a lot of time and material as well.

octatube