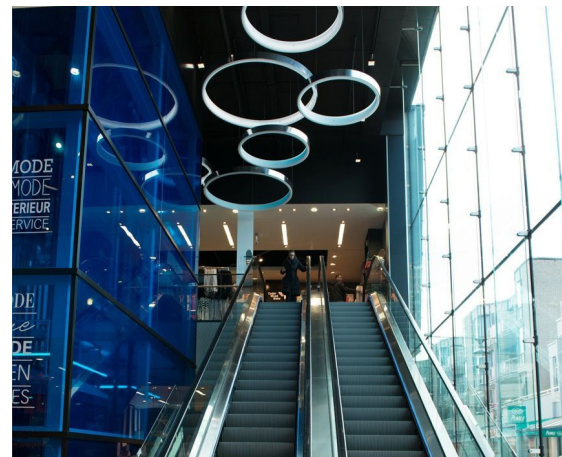


METROPOLE

Architect
Client
Location
Year

FORMAT ARCHITECTEN
AANNEMERSBEDRIJF VAN ZOELN
NETHERLANDS, ALMERE
2013

06775



The project Metropole, a former theatre complex, is situated in the Stationsstraat in Almere. Format Architecten made the design for the redevelopment and transformation of the building into a shopping centre, with Primark as the principal tenant.

In the design of the facades there is a large contrast between open and closed building parts. For the open facade elements an all-glass facade with 10,4 meter long glass fins provides maximum transparency.