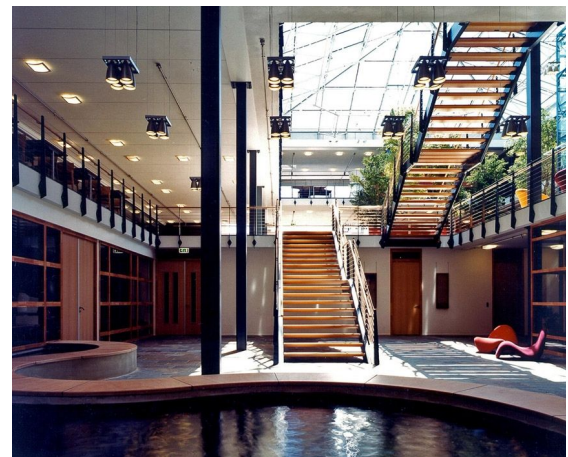


# ORANJEWOUD

Architect  
Client  
Location  
Year

OVING ARCHITEKTEN  
ORANJEWOUD  
NETHERLANDS, HEERENVEEN  
1999

05154



The glass pyramid skylight covers the head office of Oranjewoud Engineering in Heerenveen. Oving architects designed a functional office that harmoniously blends into its surroundings, after winning the competition. The atrium is a lively area with trees where the pyramid skylight provides the interior including the basement with natural light. The use of bespoke steel structure in combination with the structural glazed roof results in a highly transparent and slender construction.