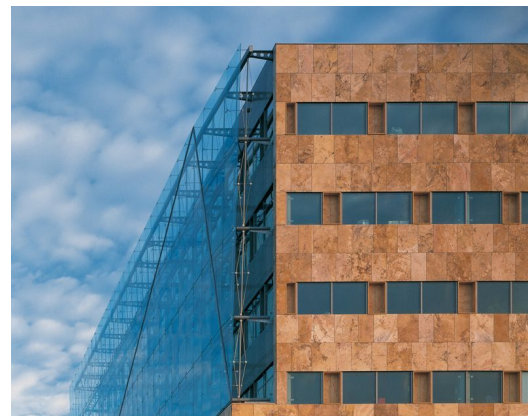


ZWITSERLEVEN

Architect
Client
Location
Year

DE ARCHITEKTEN CIE.
BALLAST NEDAM
NETHERLANDS, AMSTELVEEN
1997

04238



For the headquarters of the Dutch insurance company Zwitserleven in Amstelveen (designed by the Architecten Cie) a second skin facade has been realized and two glass skylights with trusses partly stabilized with innovative glass pressure rods.

octatube