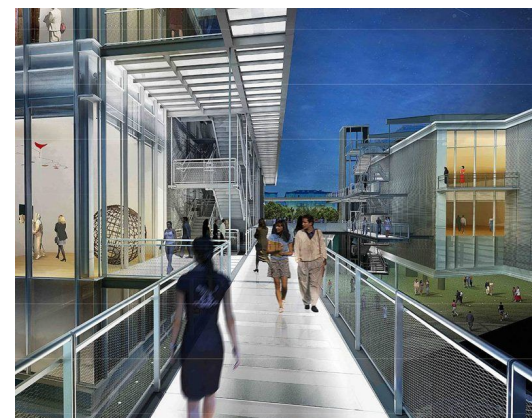
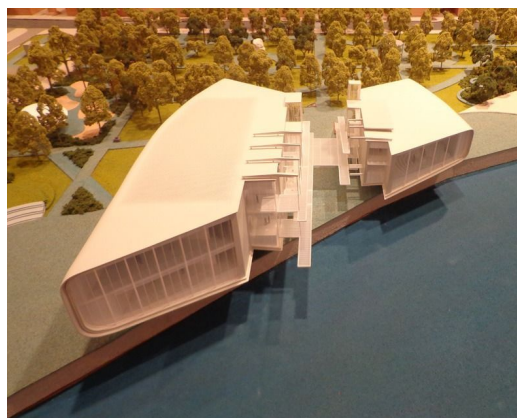


THE BOTIN CENTRE

Architect
Client
Location
Year

RENZO PIANO BUILDING WORKSHOP
UTE OHL-ASCAN
SPAIN, SANTANDER
2014

06946



The Botin Centre is designed by Renzo Piano Building Workshop and shall become a new cultural and international highlight and icon in the port of Santander on the northern coast of Spain. Cantilevering above the sea and situated next to a large park, the Botin Centre will provide space for art, culture and diverse activities of the Botin Foundation. The iconic building is characterized by two large rounded volumes that are connected by means of glass walkways.

More than 6000m² of facades and cladding could be divided into larger elements each with their own complexity. A lot of research has been done to integrate the material characteristics of duplex stainless steel in the architectural detailing. The use of high-end duplex is justified by the need of durability and low maintenance in the marine environment.