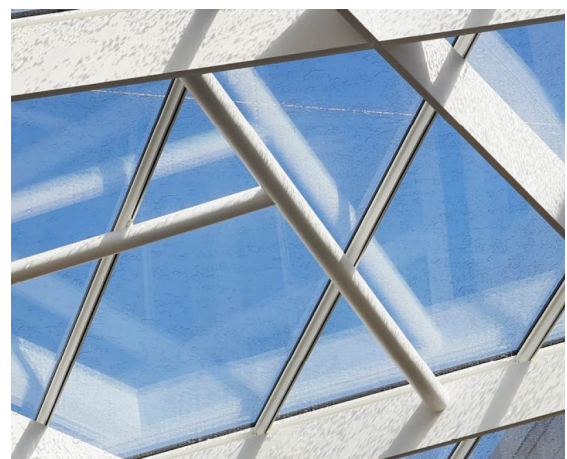
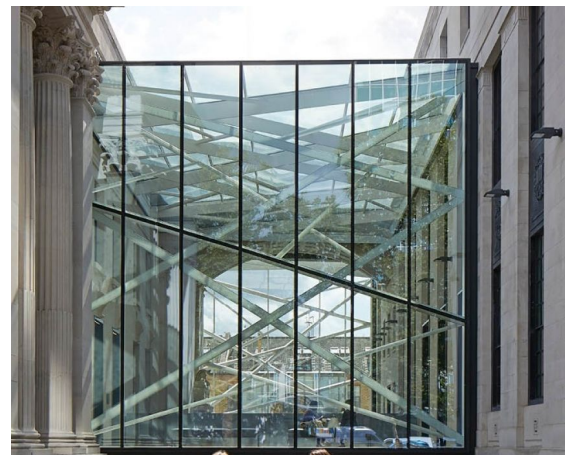
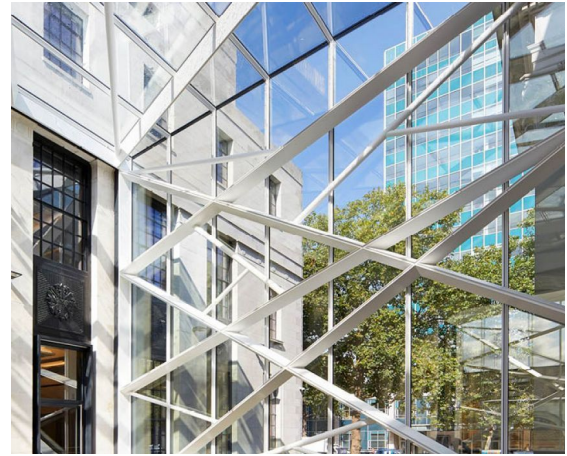


SAMMY OFER CENTRE

Architect
Client
Location
Year

SHEPPARD ROBSON
WATES CONSTRUCTION
UNITED KINGDOM, LONDON
2017

07338



The architect firm Sheppard Robson was commissioned by London Business School (LBS) to create a state-of-the-art teaching centre in the Grade II listed Old Marylebone Town Hall and Library Annexe. The design included the insertion of a glazed entrance foyer and a new lecture theatre block. While complementing the historic and architectural interest of the existing buildings, the link would also create a dynamic entrance to LBS.

Several (engineering) solutions proved that Octatube could deliver the design within budget, on time and with an aesthetically high-quality finish. Octatube came up with a novel idea to separate the 'seamless loop plates' from the structural inner core in such a way that the divisions of the structural steelwork and the large loop plate elements ended up totally out of sight. The project is characterized by high-end material quality and a high level of craftsmanship, finishing and bespoke detailing.

octatube