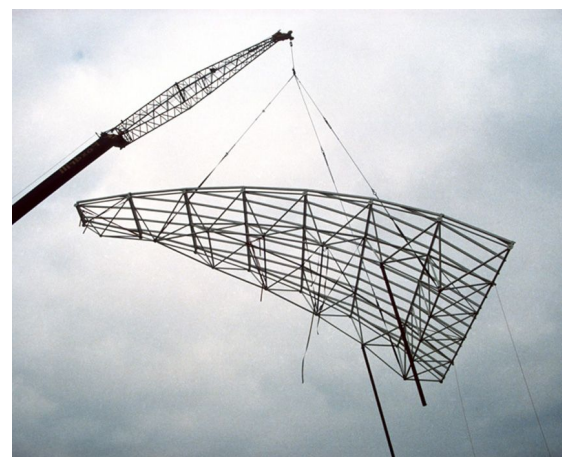
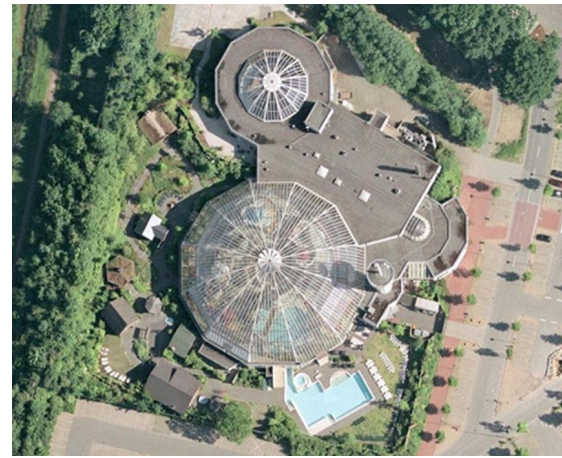


# AQUADROM

KAREL HAMMING  
AQUADROM GRUBH  
GERMANY, BREMEN  
1992

Architect  
Client  
Location  
Year

02311



For a large dome covering a swimming pool a spaceframe in the Tuball system has been applied. The structure has a diameter of 50 meters, and a minimal geometry of intertwined delta beams. The steel spaceframe is galvanized and powdercoated, including the bolted connections. This has been done in order to prevent corrosion in the swimming pool environment. The construction has been clad with insulated glass units, fixed on aluminium skylight profiles.

In the centre of the dome emergency and ventilation hatches have been included. The engineering and production of the 'Aquadrom' has been performed in the pre-computer era. In these circumstances the and precise and disciplined work of engineers and production staff made it possible to install the dome in 12 segments with minimal tolerances.