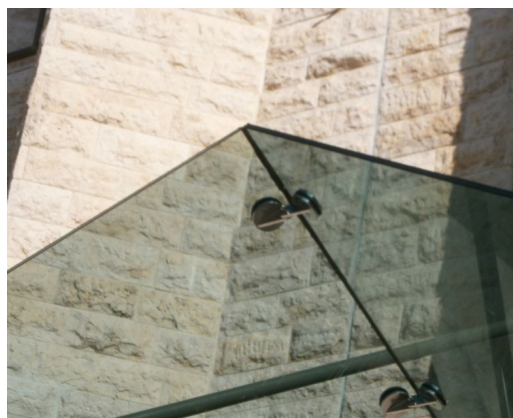


# GLASS CANOPY INBAL HOTEL

Architect  
Client  
Location  
Year

MICHAEL SCHWARTZ & ASSOCIATES  
INBAL HOTEL  
ISRAEL, JERUSALEM  
2012

06844



Octatube has realized a challenging glass canopy at the main entrance of the Inbal Hotel in Jerusalem (Israel). The architect (Michael Schwartz) was inspired by Japanese Origami, what resulted in a design consisting of folded surfaces. This architectural language fits really well to the façades of the existing hotel.

The steel structure is very slender, and besides also the glass has been used in a structural way. The triangular panels stabilize one another and are only connected at the highest points by means of small stainless steel plates. The brackets are positioned behind the stone-clad façade, that was put back in place without damage, after the installation of the glass canopy.

**octatube**