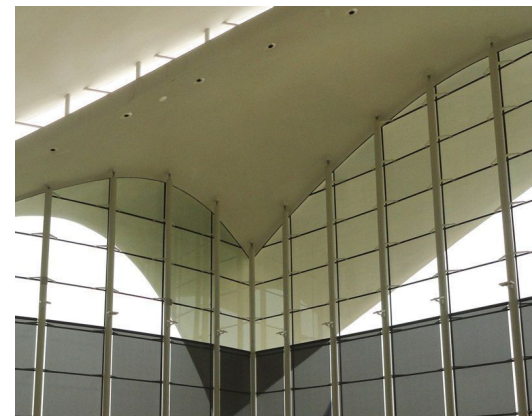


YITZHAK RABIN CENTER

Architect
Client
Location
Year

MOSHE SAFDIE ARCHITECTS
AFYRC
ISRAËL, TEL AVIV
2005

05700



The design of the Yitzhak Rabin Center in Tel Aviv is defined by two special building parts: 'The Great Hall' and the 'Library'. Both parts have plastic shaped roofs, about 30 by 30 meters, resembling dove wings as a metaphor and tribute to the assassinated president Rabin. The architect underlined the importance of seamless shell roofs. To realise this Octatube performed research on 'surfboard structures'.

The roofs were constructed of foam and wrapped in a GRP (Glassfiber Reinforced Polyester) stretched skin. In collaboration with Holland Composites, specialized in composite structures, real-size prototypes were manufactured before the actual construction. A couple of structural glass facades connect to the contours of the roofs.