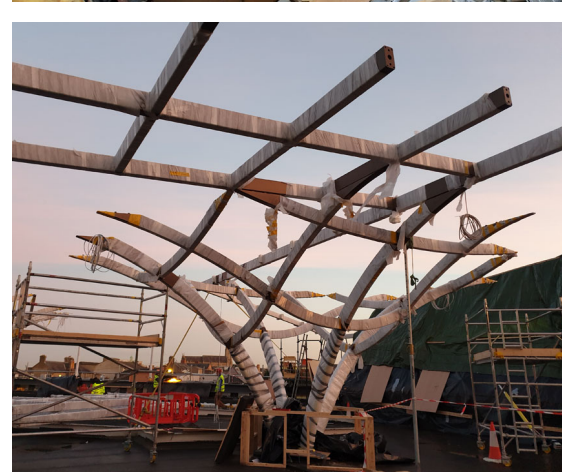
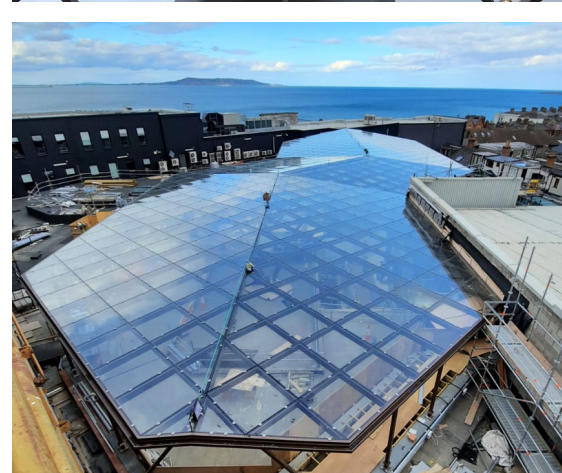


# BLACKROCK SHOPPING CENTRE

Architect  
Client  
Location  
Year

ALTU ARCHITECTS  
AVIVA  
DUBLIN  
2020

7635



In the courtyard of the renovated Blackrock Shopping Centre stands a remarkable gridshell canopy made of glass and steel. Octatube was Design & Build partner for this unusual canopy with a roof area of 1100 m<sup>2</sup>. Underneath the canopy three fluent tree-shaped columns branch out under the grid and lift the canopy above the roof of the surrounding buildings. This allows for a natural ventilation. It is covered with more than 500 glass panels bringing daylight into the courtyard.

The transition from column to canopy is as fluid as possible. We kept connections to a minimum. It was a structural challenge to overcome the large spans between the supports, especially given the extra weight the glass panels add. During welding, we turned the branched tree structure upside down so that our experienced welders could easily reach every part and corner. To achieve a clean and smooth finish of the steel elements our welders pursued a high-quality finish of the welding work.

**octatube**