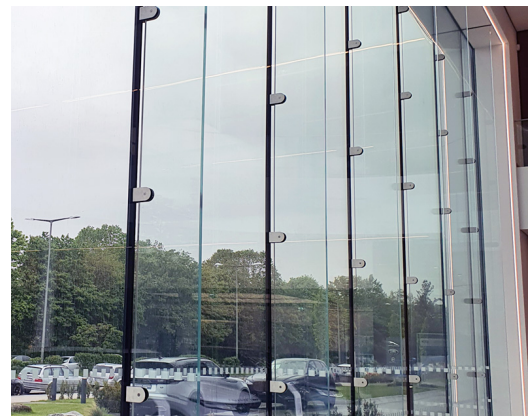


# JAGUAR LAND ROVER MUNICH

Architect  
Client  
Location  
Year

HAMACHER, DAUB & PARTNER, BAUPLANUNG +  
DESIGN GMBH  
JAGUAR LAND ROVER DEUTSCHLAND GMBH  
MUNICH  
2018

7533



Large glass facades provide maximum transparency in this showroom of Jaguar Land Rover in Munich. Octatube has engineered and installed the facades. The façades consist of large glass panels with a glass fin construction. Local clamps fix the glass every 1.5 meters, making the fins appear to be separated from the façade glass. The concrete at the base can deform and move without affecting the façade. For the large glass surfaces, low-iron glass was chosen: a highly transparent and clear glass type.

In addition to visual quality, noise requirements were also taken into account for these glass façades: the glass had to let in approximately 2 times less noise. The glass was tested at the Fraunhofer Institut in Stuttgart. The glass façade panels weigh 1500 kg each and are 8.40x2.40m. A mock-up (1:1) in which about 80% of the façade details came together, was transported to Germany and placed in the building. This allowed us to optimise detailing.

**octatube**