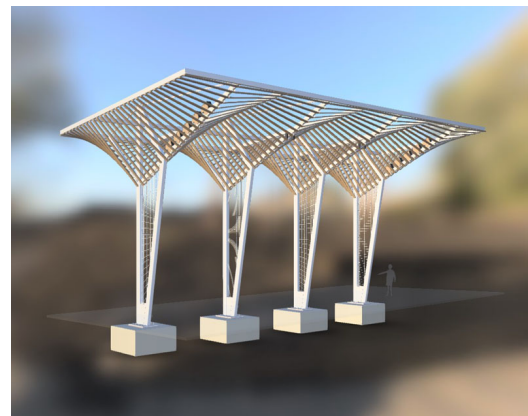
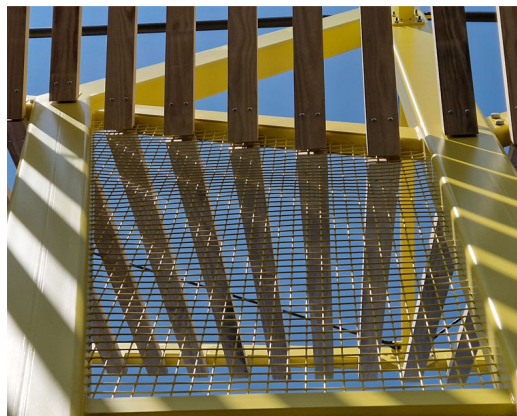


MYRTLE SQUARE CANOPY

Architect
Client
Location
Year

DARA O'DALY - DÚN LAOGHAIRE RATHDOWN
COUNTY COUNCIL
DÚN LAOGHAIRE RATHDOWN COUNTY COUNCIL
DUN LAOGHAIRE (DUBLIN, IE)
2023

7896



At the new Myrtle Square in the heart of Dún Laoghaire in south Dublin a striking yellow canopy made of wood and steel forms a landmark and an attractive place for residents and visitors to linger and relax. The canopy is 20 meters long, 10 meters wide, and 10 meters high. Four steel columns support the entire canopy. Each column consists of two beams transferring the load of the roof to the concrete foundation. We welded the columns together to create a steel frame that we brought to the construction site as one welded assembly.

In two of the columns we welded a steel mesh to allow climbing plants to grow up. We connected the steel girders to the columns with compression struts and tension rods, as well as tension bars with the same cross-section as the girders. The steel structure carries wooden elements that have no structural function. We also integrated lights into the structure so that the canopy is also pleasantly lit at night.