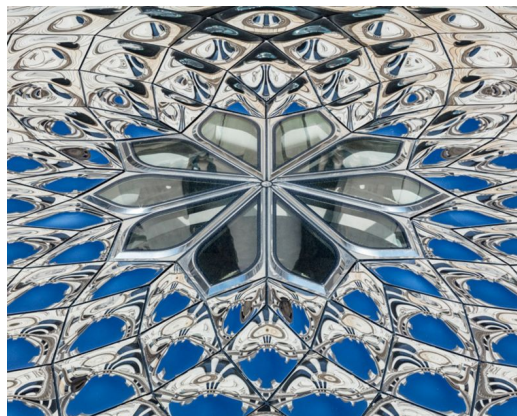
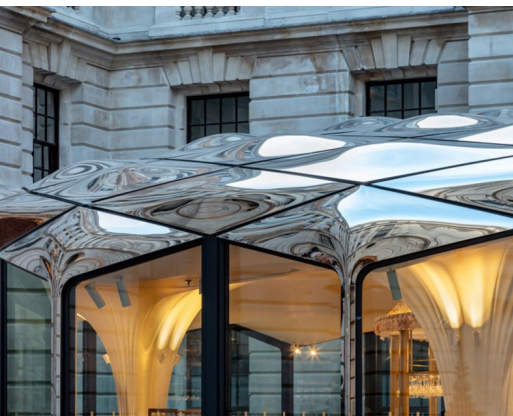


THE OWO COURTYARD PAVILION

Architect
Client
Location
Year

DAEWHA KANG DESIGN
THE OWO RESIDENCES BY RAFFLES LONDON
LONDON, UK
2023

07883



A new and contemporary pavilion has been realised in the Grand Courtyard of The OWO, the former Old War Office in Whitehall, London. Mirror-polished 3D stainless steel panels on the roof give the pavilion its striking appearance. Octatube translated the highly bespoke design of this pavilion into a technical proposal, and was appointed to engineer and built it. The extraordinary geometry of the pavilion has no straight lines and therefore required bespoke solutions and clever craftsmanship.

To develop and deliver the 202 mirror roofpanels we worked with experienced manufacturers, using state-of-the-art techniques, including hydraulic pressing, combined with high quality laser cutting, stainless steel welding, hand polishing and structural glueing. High precision and the use of tailor-made templates and fixtures helped ensure the panels were perfectly aligned during installation. The result is a true eye-catcher: the light and mirrors of polished steel create a dynamic and ever-changing visual experience.

octatube