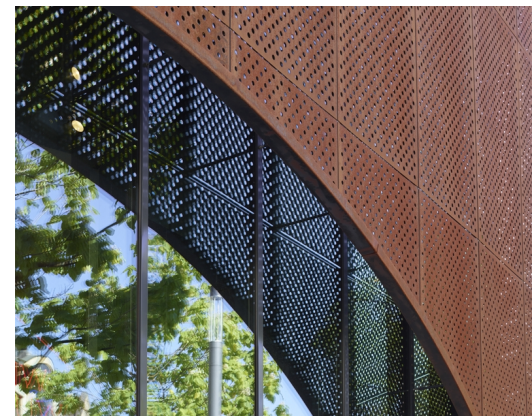


MARTIN-LUTHER-PLATZ PAVILION

Architect
Client
Location
Year

MOLESTINA ARCHITEKTEN
WAYSS & FREYTAG INGENIEURBAU AG
DÜSSELDORF, GERMANY
2018

07555



The pavilion with orange-brown corten steel and arches is based on the colour scheme of St. John's Church and the historical facade of the adjoining exclusive shopping mall; Schadow Arkaden. The inner layer of the facade construction is a transparent glass curtain wall façade. The second skin facade consists of perforated corten steel which a sun protection function. Octatube has been hired as a facade specialist because it is a combination of two facades and we were able to realize both them.

Steel columns with aluminium profiles for the glazing system have been built around the supporting structure. Steel carriers are attached to the steel columns from which the corten sheets have been suspended. Corten rusts naturally. This has consequently been taken into account in the engineering phase. Plastic plates are attached between all connections with normal steel so that the different types of steel do not touch each other.

octatube